

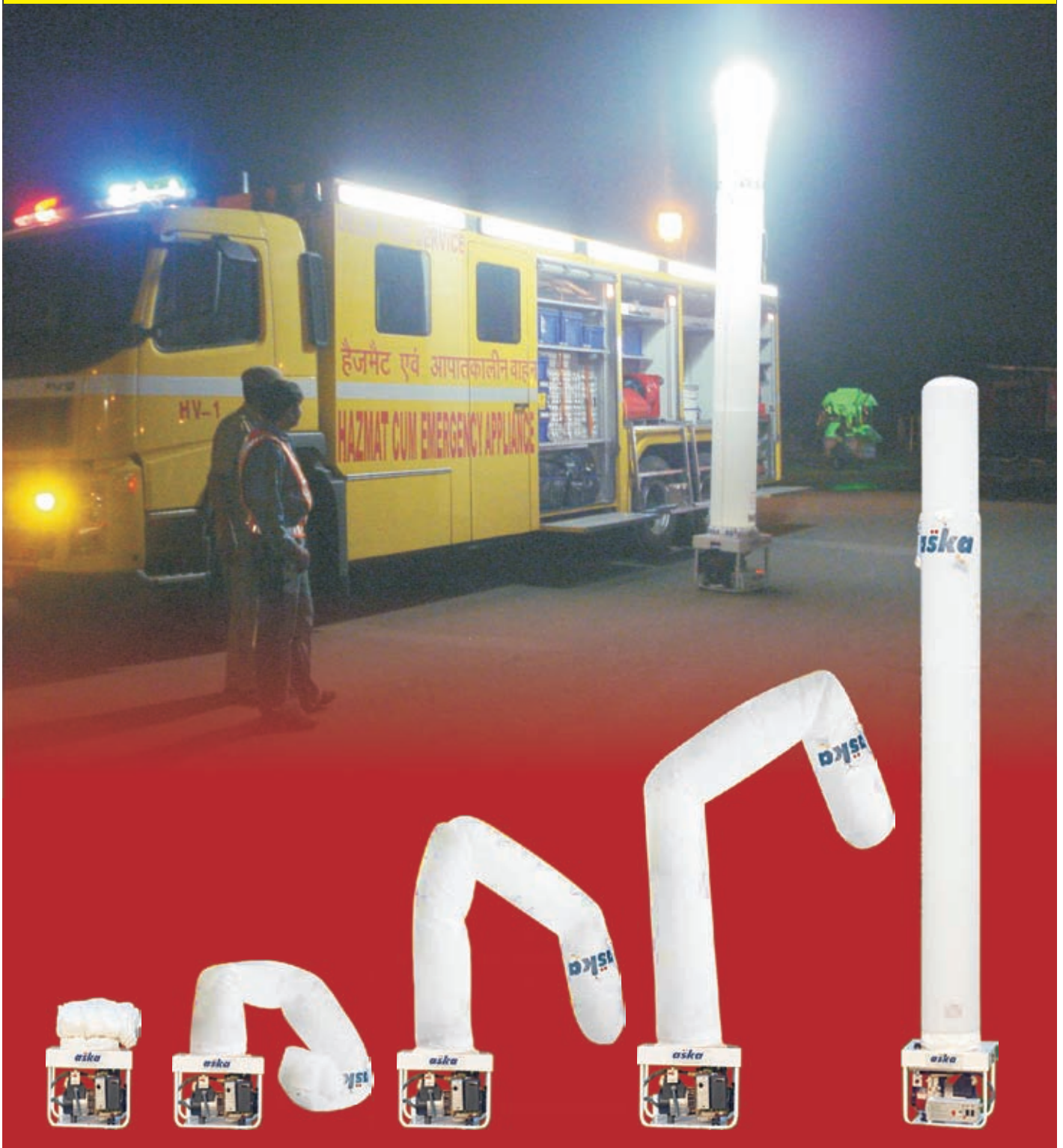
# Inflatable Light Tower

Glare Free Light

Patented Worldwide, Indian Patent No: 191538

Model No. AIT-4500 (General)

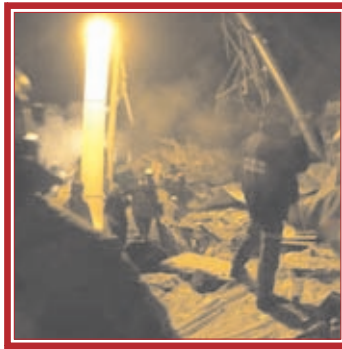
## On DGS&D Rate Contract





Portable Inflatable Light Tower is an established innovative product designed specifically for temporary or emergency illumination requirement. This system is light weight, portable and illuminates an area of around 10,000 Sq Mtr. within 3 mins.

Conventional lighting towers require vehicles for towing and need lot of wiring for assembly leading to loss of important time. It is also dangerous for the workers / rescue forces as messy wires lay on the ground where they work.



## The Problem

How to expedite the rescue work in emergency situation during dark hours and how to have instant illumination during night working for longer duration without using a bulky equipment, which is not easily transportable and difficult to operate by an individual?

## The Solution

Inflatable Light Tower is made up of special material, which holds 400W Metal Halide source on the system.

The system can be easily operated in dark, windy and rainy conditions. This system will illuminate an area up to 10,000 Sq. Mtrs. approx. within 3 mins. It can be easily carried in trunk or front seat of any small car / vehicle.

Thus, this system is the first responder in any kind of disaster and useful for night working.

## Operation

It can be operated by a single person by using the inbuilt Genset and the Blowers. Thus, the tube starts inflating by itself to the height of 4.5 Mtrs. A series of Axial Fans (Blowers) constantly inflate air into the supporting structure, in which sufficient pressure is generated to guarantee the necessary stability of the system. Ground anchorage of structure by guy ropes allows the system to operate in bad weather conditions.



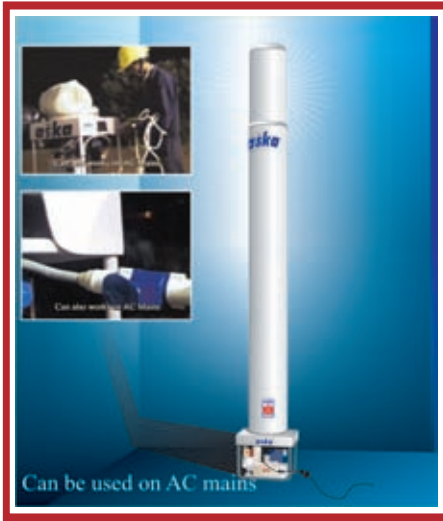
**No Light / Power**



**With Light / Power**

**ASKA Equipment Ltd. is the official licensee to manufacture and sell the "international patented" Portable Inflatable Emergency Lighting System.**

**On DGS&D Rate Contract**



## Salient Features

- Ideal in places where electricity supply network is switched off.
- Small, lightweight, foldable and portable.
- Takes just 60 secs. to inflate and 3 mins. to achieve full illumination.
- Can be operated easily by one person. It is safe and reliable.
- Inflates to a height of 4.5 mtr. from ground level.
- 400 W Metal Halide Lamp to illuminate an area of 10,000 Sq. Mtrs. approx.
- Deflates (folds back) easily in just 4 mins.
- Fuel Tank suitable for 8 hrs. running.
- Can also work on 220/240 AC mains.
- Standalone glare free illumination system.



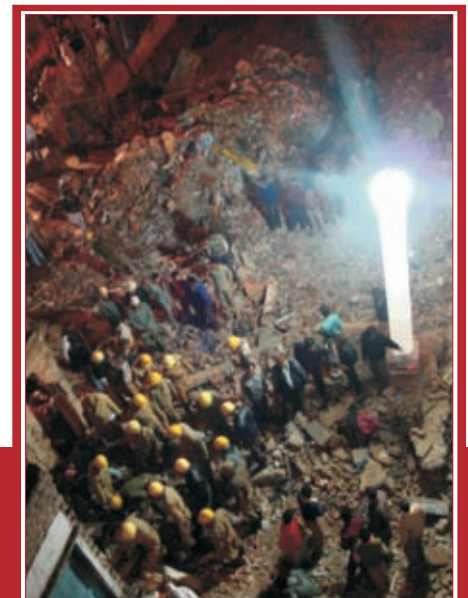
## Shut down and packing



## SPECIFICATION

Inflatable Emergency Lighting System

Closed System LxBxH	585 x 450 x 520 mm
Tower Height	4.5 Mtrs.
Total Weight	45 Kg.
Engine	4 Stroke Petrol
Generator Model	1200 VA (rated)
Tank Capacity	8.0 Ltrs.
Light Source	400 W Metal Halide
Brightness	42000 Lumen
Time for Tower Extension	60 Sec.
Time for Max. Light Efficiency	3 Mins.
Time for Closing	4 Mins.
Dimension/Weight Tolerance	±5%



**Provides sufficient lighting, which is glare free and easy on eyes.**



- Navy
- Military
- Airports
- Railways
- Civil Protection
- Mineral Industry
- Police Modernization
- Fire Departments/OEM's
- Emergency Management
- Hospitals
- Fire/HazMat
- Public Health
- Law Enforcement
- Disaster Recovery
- Specialized Response Teams
- Sports and Entertainment
- Mobile Command Centers
- Oilfields and Oil Refineries
- Archeological and Geological Research



**Corporate Office for correspondence:**

**Aska Equipments Ltd.**  
 Aska House, 193, Deepali, Deepali Chowk,  
 Outer Ring Road, Pitampura, New Delhi - 110 034 (India)  
 Ph. : +91 11 27014416 / 27014417  
 Fax: +91 11 27014413  
 Email : info@askagroup.com

**Order Should be Place on:**

**Aska Equipments Ltd.**  
 F-98, Bahahrabad, Industrial Area  
 Haridwar- 249402 ( Uttarakhand)  
 Email : info@askagroup.com

**www.askagroup.com**

*Products specifications, information in brochure are subject to change without notice.  
 Options and standard features may vary in some models.*

